

Bo-Jest Notes

Email:

RE: engines.

The weight of a 20hp engine varies from 200lbs to 360lbs. What's the maximum engine weight for this boat?

ANS: Motor is over the CB so varying motor weights will not affect balance. In calculating the displacement, 240 lbs was used.

Suggestion: most of the other boat descriptions, except for the (BO-JEST) have all of this information. please include it .

ANS:

- Displacement: 2660
- Max engine weight: See above
- Max cargo weight: Displacement is figured with all gear aboard and passengers. 505 lbs. additional will increase draft 1".
- Max speed: 6 to 8 knots
- Max range: Diesel: 20 hp will consume 1 gal/hour (approx 8 knots/gal). This is a variable figure depending on conditions and proper propeller. Using more actual hp than 10 hp will decrease range. Designed fuel capacity: 26 gals; could be increased.

Underwater hardware

These prices are correct as of October, 2009. Contact us for current prices.

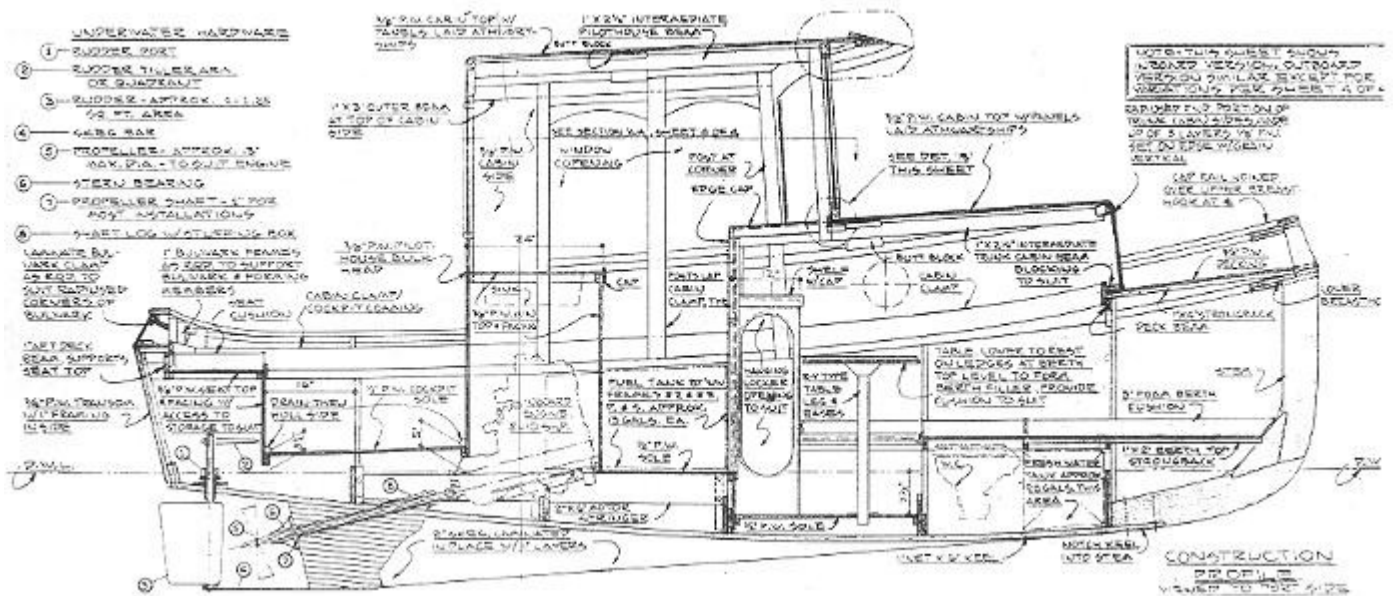
** Item numbers starting with "9" are in our [Inboard Hardware Catalog](#). Other items not listed in price list.*

*** The Stern Bearing Housing currently available is 2-1/4" wide and the skeg on the Bo Jest is 2". The skeg will need to be widened to accomodate this housing.*

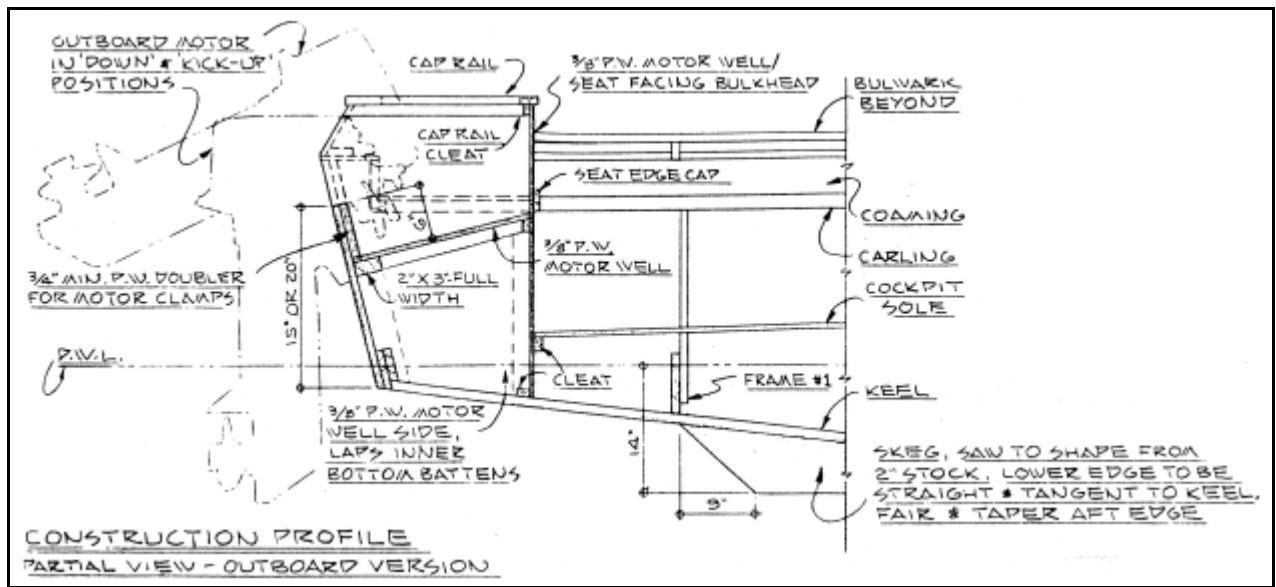
Item	Item Number	Details	Price*
Rudder	10RS2BR1.0	11.5"(top)x14.5"(ht)x9.5"(btm) shaft: 1", pintle: 7/8" 18 lbs.	\$511.85
Skeg Bar	92-600	1/2"x2"x30" 12 lbs. - Can be drilled to suit rudder above	\$386.71
Tiller	90-028	1"	\$42.00

Rudder Port	90-102	1" shaft	\$63.50
Stern Bearing Housing	92-700**	1" shaft, oval 3.5 lbs.	\$152.85
Stern Bearing	93-001	1" shaft	\$81.30
Propeller Shaft	90-734	1" shaft, length varies	\$175.00
Propeller	91-25_	13" x varies	\$390.00
Shaft Log	90-195	1" shaft	\$64.50
Stuffing Box - Packing Type	90-223	1" shaft	\$39.50
Hose	90-232	For Shaft Log/Stuffing Box Assembly	\$9.50
Clamps	90-818	2 Needed	\$2.10 each

Bo-Jest Notes 2



Construction Profile



Outboard motor option