

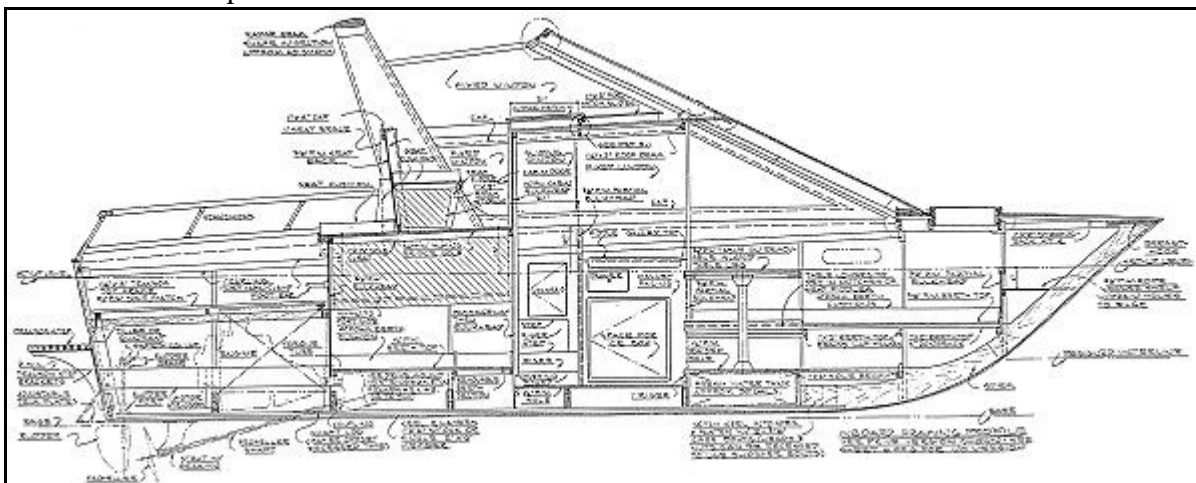
## Catalina Express Notes

### CATALINA EXPRESS SPEED CHART

The speeds listed below are approximate and not guaranteed. They are based on the listed displacement and may vary if displacement (weight) varies. All speeds assume well-faired hulls driving through properly sized propellers with suitable gearing to match the power and torque curves of the engine in question. All speeds are in knots per hour. To convert to miles per hour, divide by .87. Horsepower is given as constant 24-hour rated SHAFT HORSEPOWER (SHP); NOT brake horsepower (BHP), nor intermittent ratings. If only BHP is known, multiply this figure by .70 for approximate constant SHP. Figures assume S.A.E. methods. If ratings given in D.I.N., these will be about 8% less than S.A.E. If ratings given in KW, this will give ratings about 75% of BHP (S.A.E.) ratings. In all cases, it makes no difference if the engine is diesel or gasoline powered.

**27' x 22.5' x 6015 lbs. (2.69 tons)**

58 shp	14 knots
72 shp	16.5 knots
98 shp	19 knots
125 shp	21 knots
150 shp	23.5 knots
220 shp	28.5 knots
300 shp	33 knots
385 shp	38 knots
490 shp	42 knots
600 shp	47 knots



### Inboard Framing Profile