

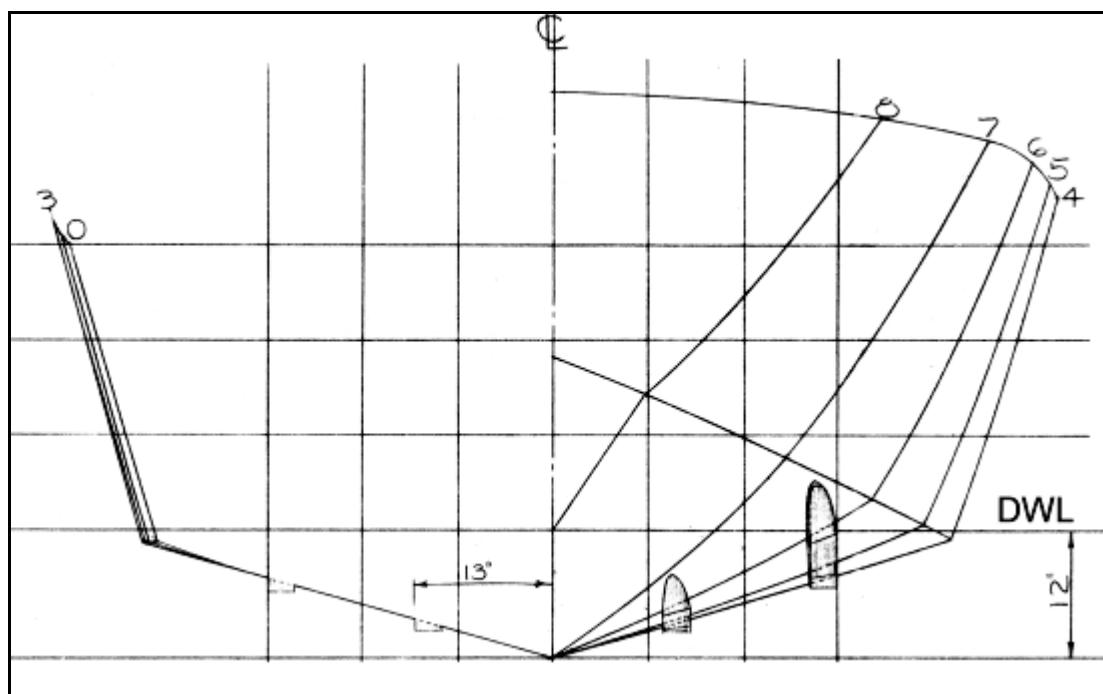
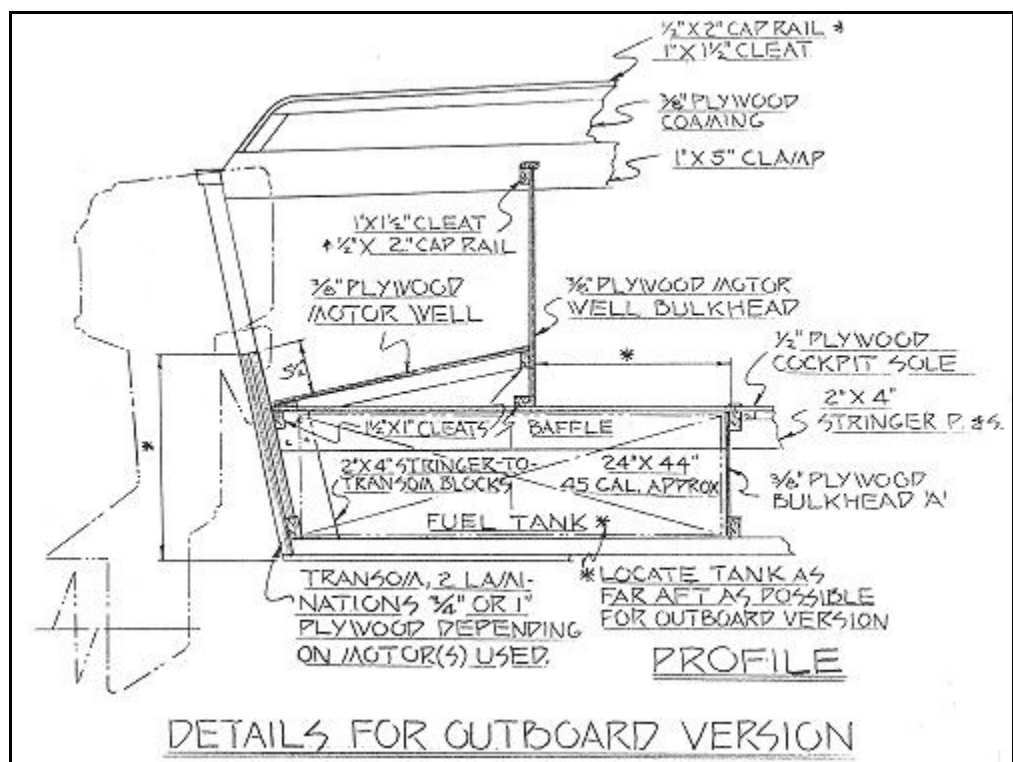
## Mai Tai Notes

### MAI TAI SPEED CHART

The speeds listed below are approximate and not guaranteed. They are based on the listed displacement and may vary if displacement (weight) varies. All speeds assume well-faired hulls driving through properly sized propellers with suitable gearing to match the power and torque curves of the engine in question. All speeds are in knots per hour. To convert to miles per hour, divide by .87. Horsepower is given as constant 24-hour rated SHAFT HORSEPOWER (SHP); NOT brake horsepower (BHP), nor intermittent ratings. If only BHP is known, multiply this figure by .70 for approximate constant SHP. Figures assume S.A.E. methods. If ratings given in D.I.N., these will be about 8% less than S.A.E. If ratings given in KW, this will give ratings about 75% of BHP (S.A.E.) ratings. In all cases, it makes no difference if the engine is diesel or gasoline powered.

#### **22' 11" x 19' 4" x 3900 lbs.**

34 shp	13 knots
46 shp	15 knots
60 shp	17 knots
76 shp	19.5 knots
95 shp	22 knots
135 shp	26 knots
185 shp	31 knots
240 shp	35 knots



**Sections**