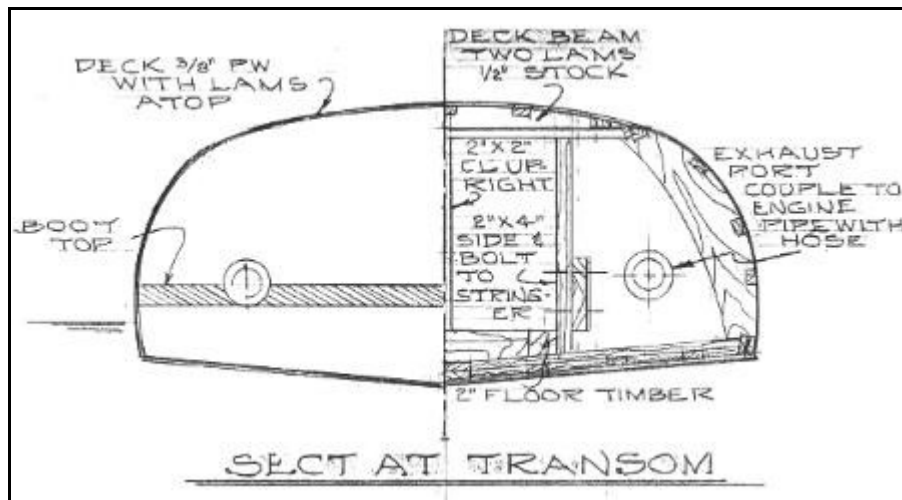


Monte Carlo Notes

Underwater hardware

The following hardware is used on the Monte Carlo. These items are called out on the plans. The "Key" refers to notes on the drawings. "Part #" refers to items in the Glen-L Inboard Hardware catalog. See "Inboard Hardware" on our site.

Key	Description	Part#	Size & Comments
A	Shaft Log Base Stuffing Box Hose Clamps	90-195 90-223 90-232 90-818	Approx. 15° angle For 1" dia. shaft To fit above 2 required for above
B	Strut	90-122	1 1/4" dia bore/14°
C	Bearing	90-352	1" dia shaft for "B"
D	Shaft	90-736	length to suit
E	Prop	13" dia	1" bore, pitch/rotation to suit motor
F	Rudder	90-016	1 1/8" shaft, 7 1/2" x 12 1/2" blade
G	Rudder stuffing box	90-101	1 1/8" dia
H	Tiller arm	90-029	1 1/8" dia
I	Safety collar	90-401	For 1 1/8" shaft
J	Rudder post bracket	90-033	For 1 1/8" shaft
K	Prop nut kit	90-723	Key, nut & cotter key for "D"

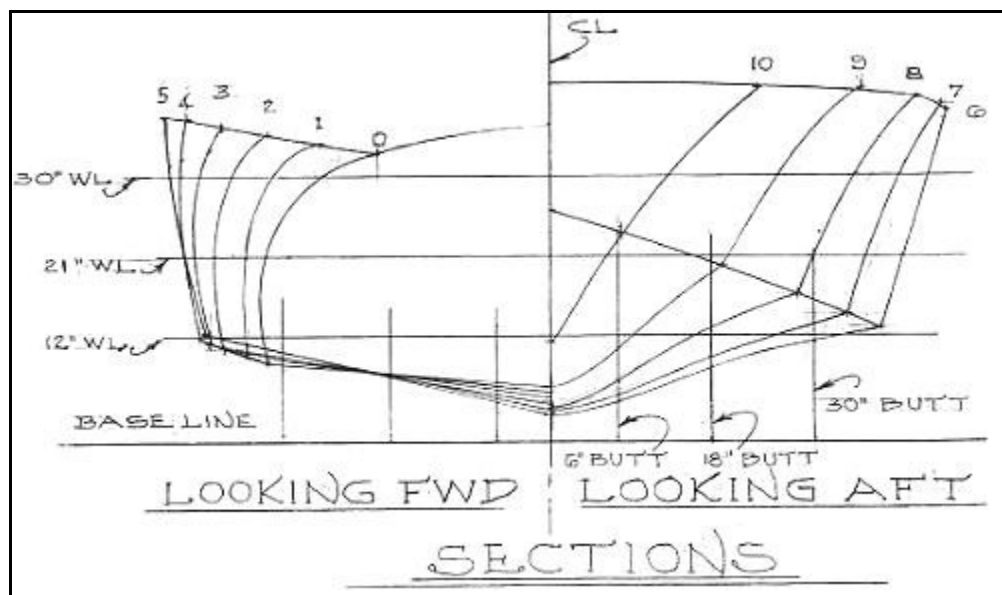


Notes on the transom pattern

The outside of the transom is smaller than the inside.

The pattern shows the transom from the INSIDE (looking aft)... but it is NOT a true view. At the side and top edges, the OUTSIDE contours of the transom are given. All else on the pattern shows the inside. This was done to eliminate confusing phantom lines. That is what the instructions and the section drawings point out.

The top edge will not be a 30° angle. When the transom is installed, the outside contour will be faired; the angle will change from 30° at the chine to almost nothing at the top centerline. This must be done "in place". The transom side pieces can be cut with the saw set at a 30° angle so that you are not undercutting the pattern contour, but leaving more material. Look at the section view on the pattern, at the arrows showing which lines are shown.



Conversion for a small block Chevy with transmission & underwater hardware

This is a typical list of hardware for the Monte Carlo, but not the only option. You may wish to substitute chrome parts in some cases or to use a larger motor. If a larger diameter is used, this will affect the choice of prop shaft and all associated hardware. The prices are meant for estimating installation cost only. Additional items: motor, hose for exhaust ports, steering.

ITEM	DESCRIPTION	QUAN	PRICE	TOTAL
99231	SM BLK CHEV CONVERSION W/Transmission	1	-	4106.96
90730	WATER PICK UP 3/4"	1	-	40.00
90736*	PROP SHAFT	1	-	104.50
90723	PROP NUT KIT	1	-	5.40
9125_	PROPELLER	1	-	308.00
90122*	STRUT, 14 DEG	1	-	200.00
90352	BEARING FOR ABOVE	1	-	60.82
90215	SHAFT LOG	1	-	52.50
90232	HOSE	1	-	4.75
90818	HOSE CLAMPS	2	1.60	3.20
90223	STUFFING BOX	1	-	34.75
14-289	FIN, FLAT BASE	1	-	31.50
90016	RUDDER, 1 1/8"	1	-	288.50
90101	RUD STUFFING BOX	1	-	89.75
90033	RUD POST BRKT 1 1/8"	1	-	63.50
90029	TILLER ARM 1 1/8"	1	-	33.50
90461	SAFETY COLLAR 1" (SHAFT)	1	-	16.95
90401	SAFETY COLLAR 1 1/8" (RUDDER)	1	-	9.50

05-020	BOW EYE	1	-	25.95
90752**	EXHAUST PORT, CHR 2 7/8"	2	84.50	169.00
90520*	EXHAUST HOSE	? FT	16.50	-
				Total: \$5,649.03
<p>* Specify degree/length ** May want to use 0750 POL ALUM @ \$50.50 ea</p>				