

Odyssea Notes

ODYSSEA SPEED CHART

The speeds listed below are approximate and not guaranteed. They are based on the listed displacement and may vary if displacement (weight) varies. All speeds assume well-faired hulls driving through properly sized propellers with suitable gearing to match the power and torque curves of the engine in question. All speeds are in knots per hour. To convert to miles per hour, divide by .87. Horsepower is given as constant 24-hour rated SHAFT HORSEPOWER (SHP); NOT brake horsepower (BHP), nor intermittent ratings. If only BHP is known, multiply this figure by .70 for approximate constant SHP. Figures assume S.A.E. methods. If ratings given in D.I.N., these will be about 8% less than S.A.E. If ratings given in KW, this will give ratings about 75% of BHP (S.A.E.) ratings. In all cases, it makes no difference if the engine is diesel or gasoline powered.

LWL: 31'8" x 7.75 tons

30 shp	7.5 knots
48 shp	9 knots
68 shp	10 knots
85 shp	11 knots
110 shp	12 knots

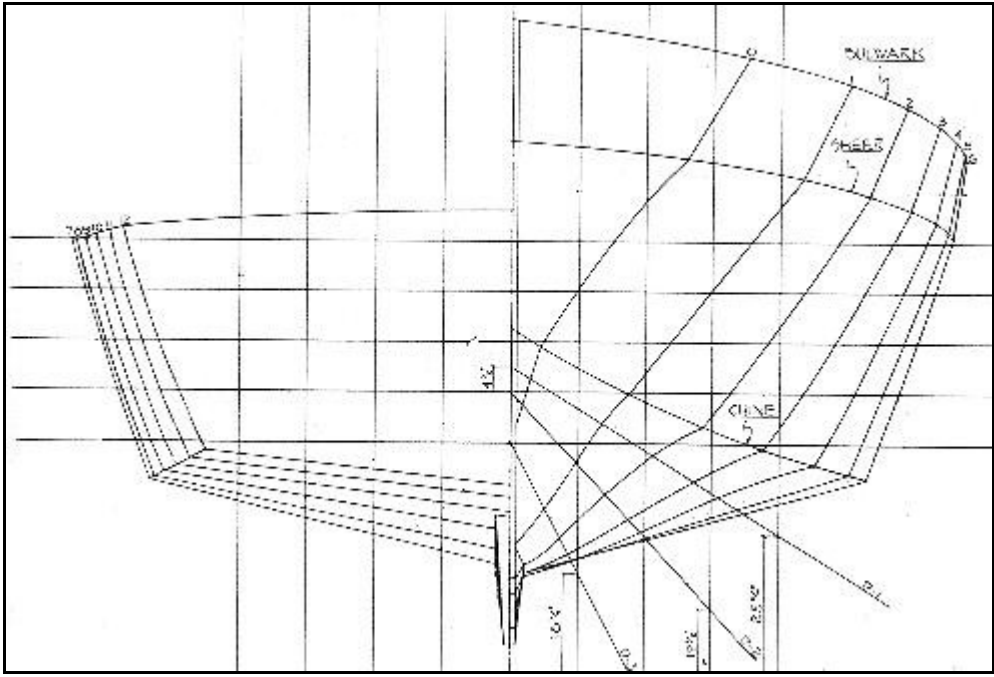
12 knots is the absolute maximum speed for this hull, regardless of power installed.

Range: 1050 miles with 240 gals

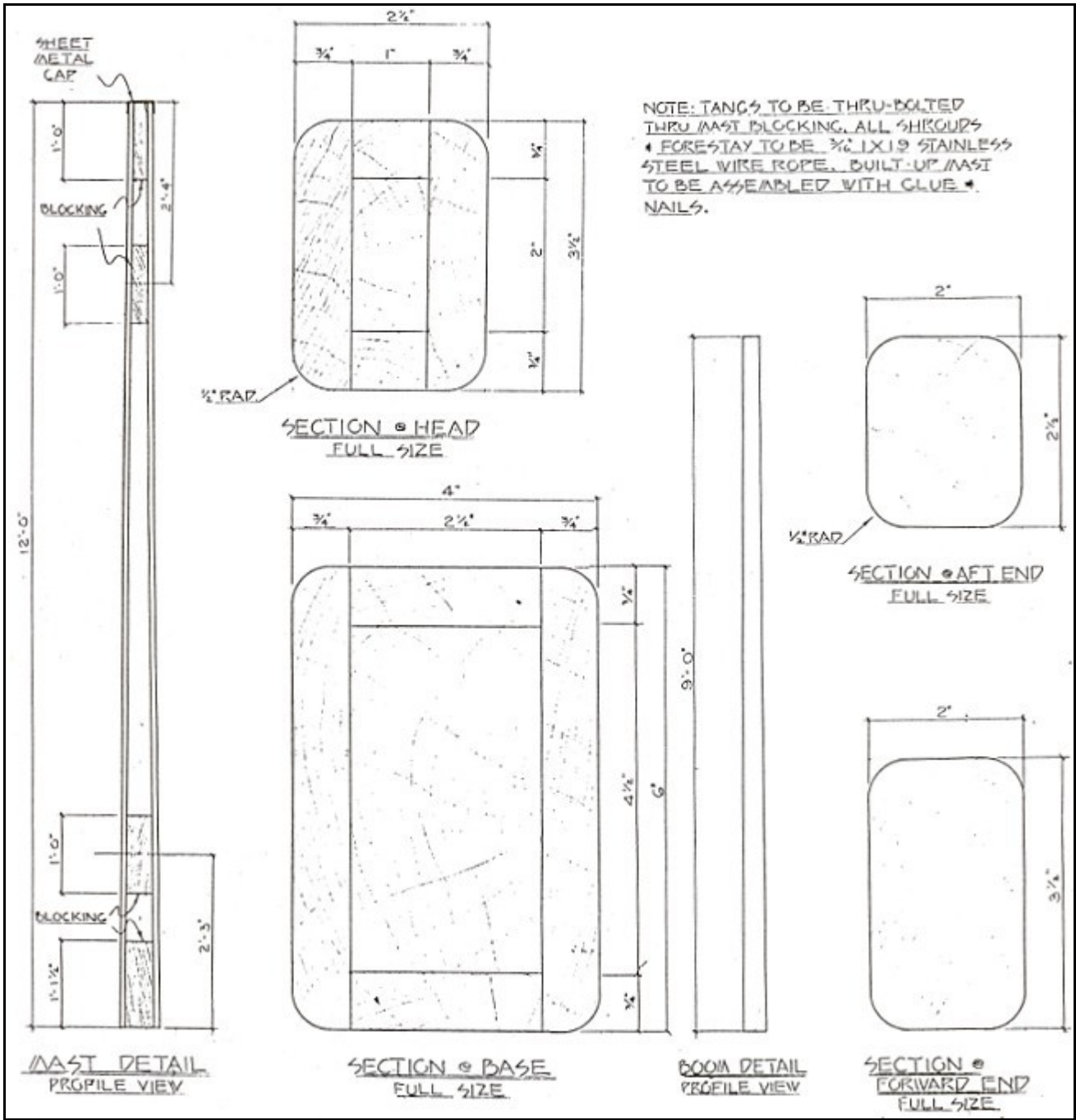
Prismatic = .633

Height overall from bottom of keel to top of flying bridge: 14' 10"

Height from bottom of keel to cabin top: 11' 8"



Odyssea Sections



Mast Details