

Riviera Notes

Subject: Registry update
Date: Tue, 27 Jun 2000
From: Bronkalla, Mark

Riviera / Mark Bronkalla

On the water. Lots of compliments. Top speed 46 mph. 744 hours so far

Hi Barry and Gayle,

The boat has been fun to build and I have received a lot of support from family, friends and new boat building acquaintances.

Thank you for your help in answering questions and getting the parts I needed.

We launched the boat for the first time on June 23rd on Pewaukee Lake.

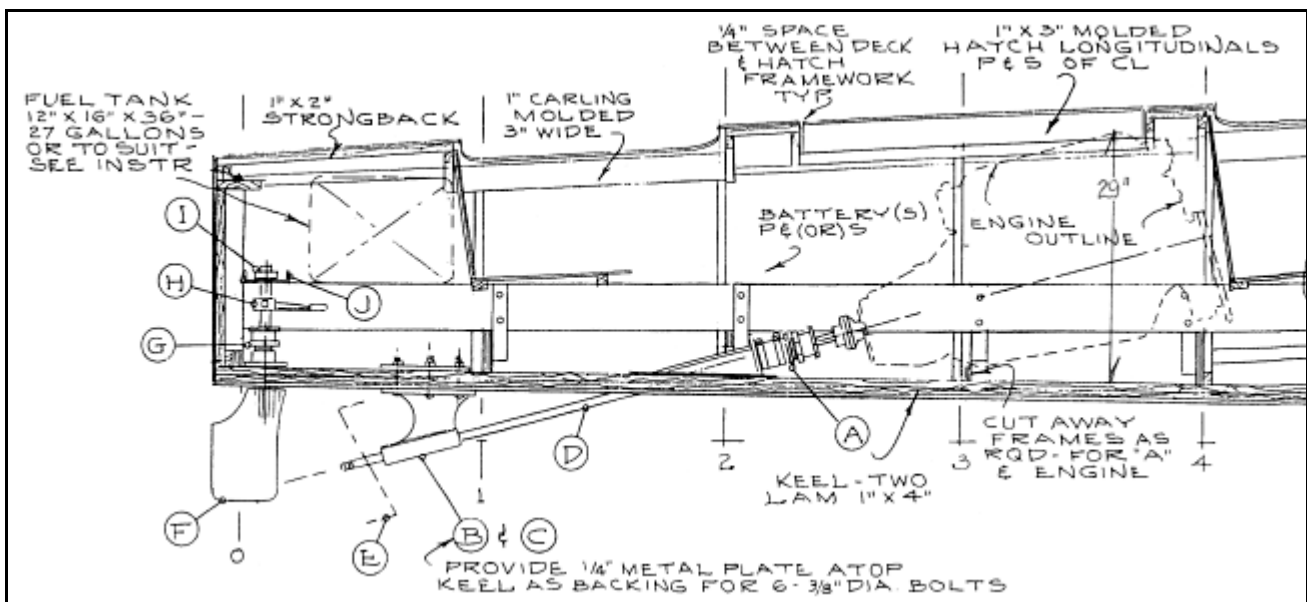
The Riviera runs well as the family ski boat. Lots of room and plenty of power. It can pull a skier at only 2500-3000rpm. Top speed at this time is 46mph at 5000 rpm. The boat drives well and handling is excellent. Teal, my wife, now thinks that she is the captain and principal driver.

It is amazing how many people stop to ask about the "restoration". All are amazed when they find out it is new construction.

More (hopefully better) photos to come after this weekend.

Hopefully more people will see that building your dream is possible and within a reasonable amount of time. We started on the boat Sept. 1 (99) and it is now 95% complete. This was done in approximately 20 hours per week (less than most people spend watching TV). The major work left to do is the final upholstery. We are riding on the bench seats and boat cushions for the summer.

Best regards,
Mark Bronkalla



Riviera Inboard Profile Detail

Riviera Inboard Hardware

The following hardware is used on both the Monaco and Riviera. These items are called out on the plans. The "Key" refers to notes on the drawings. "Part No." refers to Items in the Glen-L Inboard Hardware catalog.

* The prices are meant for estimating installation cost only. Prices are current as of November 2010; check the prices in our catalog to confirm prices. Additional items: motor, hose for exhaust ports, steering.

** Sizes may vary.

Key	Description	Part No.	Size & Comments	Price*
A	Shaft Log Base	90-195	Approx. 15° angle For 1" dia. shaft To fit above 2 required for above	\$64.50
	Stuffing Box	90-223		\$39.50
	Hose	90-232		\$9.50
	Clamps	90-818		\$2.10 ea.
B	Strut	90-122	1 1/4" dia bore/16°	\$290.00
C	Bearing	90-352	1" dia shaft for "B"	\$79.50
D	Shaft	90-736	length to suit**	\$211.00
E	Prop 12" dia	91-2__	1" bore, pitch/rotation to suit motor**	\$375.00
	Prop 13" dia	91-2__		\$390.00
F	Rudder	90-016	1 1/8" shaft, 7 1/2" x 12 1/2" blade	\$375.00
G	Rudder stuffing box	90-101	1 1/8" dia	\$105.50
H	Tiller arm	90-029	1 1/8" dia	\$43.00
I	Safety collar	90-401	For 1 1/8" shaft	\$11.75
J	Rudder post bracket	90-033	For 1 1/8" shaft	\$76.50