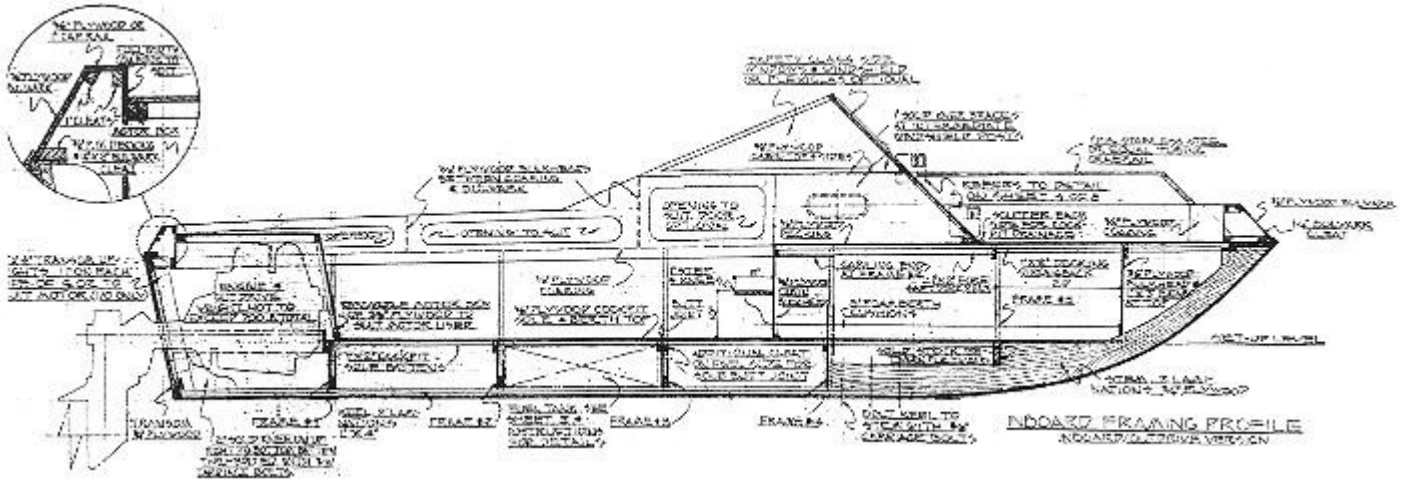


Sirocco Notes 1



Inboard Framing Profile

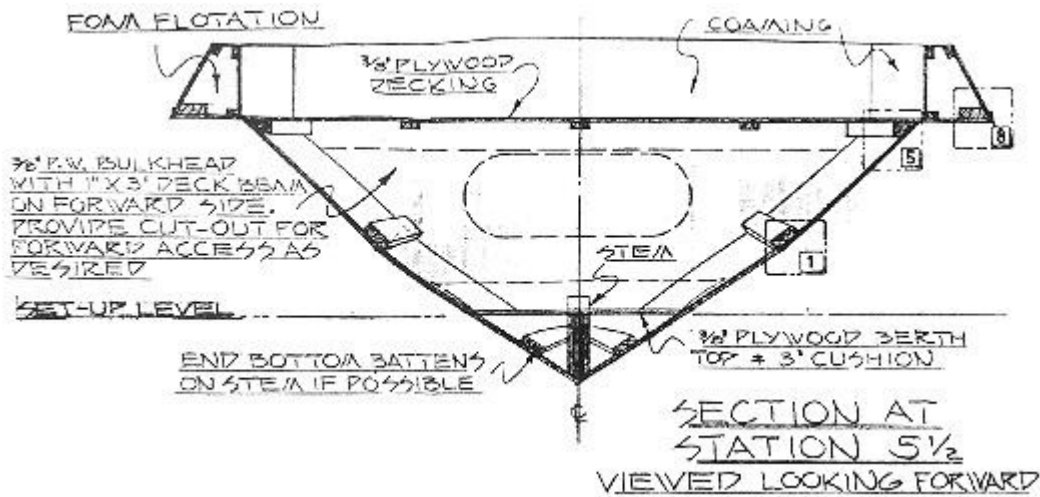
SIROCCO SPEED CHART

The speeds listed below are approximate and not guaranteed. They are based on the listed displacement and may vary if displacement (weight) varies. All speeds assume well-faired hulls driving through properly sized propellers with suitable gearing to match the power and torque curves of the engine in question. All speeds are in knots per hour. To convert to miles per hour, divide by .87. Horsepower is given as constant 24-hour rated SHAFT HORSEPOWER (SHP); NOT brake horsepower (BHP), nor intermittent ratings. If only BHP is known, multiply this figure by .70 for approximate constant SHP. Figures assume S.A.E. methods. If ratings given in D.I.N., these will be about 8% less than S.A.E. If ratings given in KW, this will give ratings about 75% of BHP (S.A.E.) ratings. In all cases, it makes no difference if the engine is diesel or gasoline powered.

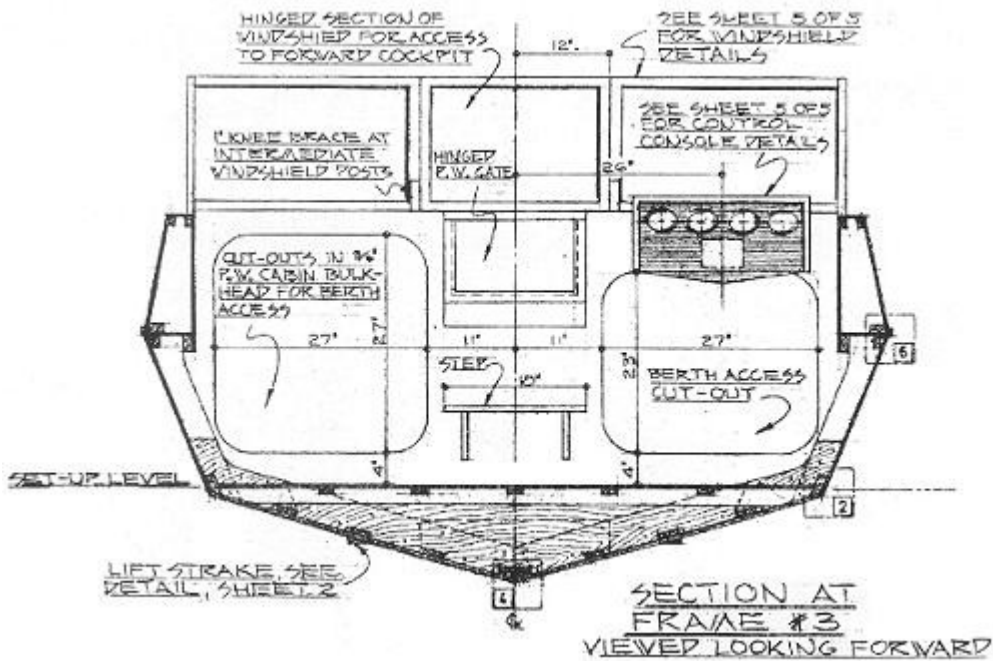
19'10" x 17'3" x 2540 lbs.

25 shp	13 knots
35 shp	14.5 knots
40 shp	16.5 knots
50 shp	19 knots
62 shp	21 knots
90 shp	25 knots
120 shp	28 knots
160 shp	32 knots

Sirocco Notes 2



Forward Cockpit



Console/Cabin Entrance